

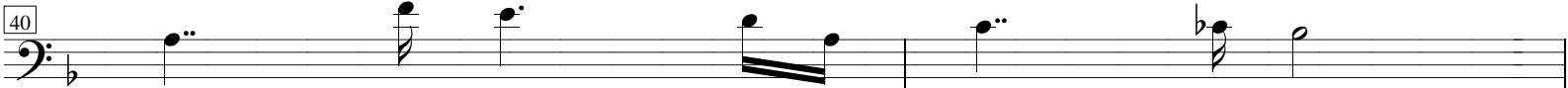
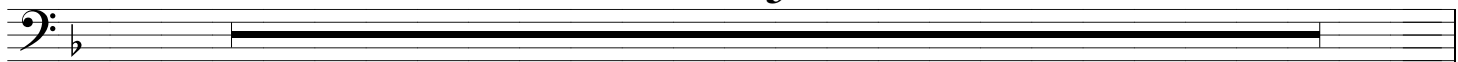


SONATINA AMAZÔNICA (Flauta/Fagote/Piano) - Vicente Fonseca 2

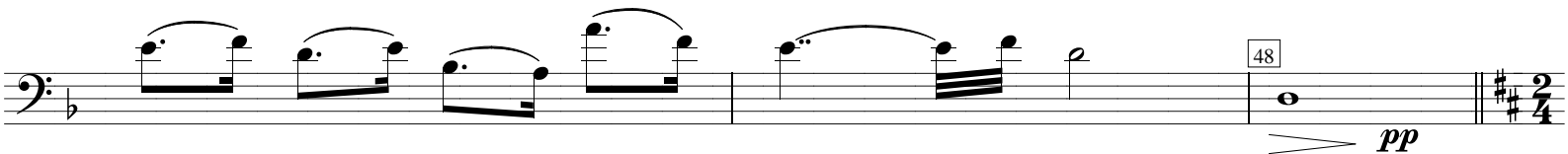
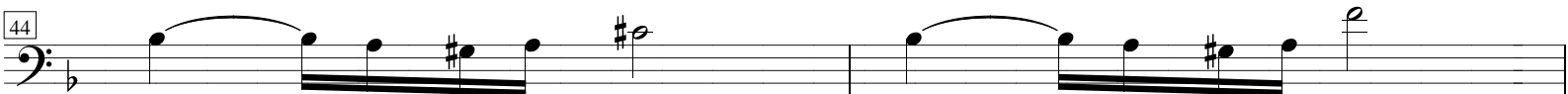
♩ = 40 CALMARIA NO TAPAJÓS

3

Fagote



*p* Com alma



*pp*

SONATINA AMAZÔNICA (Flauta/Fagote/Piano) - Vicente Fonseca 3

♩ = 80 FÚRIA AMAZÔNICA

Fagote

*f*

52

*ff*

56

*fff*

60

*rall.*



SONATINA AMAZÔNICA (Flauta/Fagote/Piano) - Vicente Fonseca 5

♩ = 100 REENCONTRO DAS ÁGUAS

4

Fagote

Musical staff for Bassoon, showing the key signature of two sharps (F# and C#) and the time signature of 4/4. The staff contains a whole rest for the first measure, followed by a double bar line and a final double bar line.

*tr*

*mf*

Musical staff starting with a trill symbol (*tr*) over a quarter note, followed by a dynamic marking of *mf*. The staff contains a sequence of quarter notes: G2, F#2, E2, D2.

*f*

80

Musical staff starting with a dynamic marking of *f*. It features a series of eighth notes in a descending eighth-note pattern, followed by a measure number of 80. The staff continues with a quarter note G2 and a quarter rest.

*ff*

84

Musical staff starting with a dynamic marking of *ff*. It features a series of eighth notes in a descending eighth-note pattern, followed by a measure number of 84. The staff continues with a quarter note G2 and a quarter rest.

*p*

Musical staff starting with a dynamic marking of *p*. It features a series of eighth notes with accents, followed by a measure with a half note G2 and a half note F#2.

88

*mf*

Musical staff starting with a measure number of 88. It features a half note G2 with a slur, followed by a dynamic marking of *mf*. The staff continues with a sequence of quarter notes: G2, F#2, E2, D2.

*f*

*ff*

*fff*

Musical staff starting with a dynamic marking of *f*. It features a sequence of quarter notes: G2, F#2, E2, D2. The staff continues with a dynamic marking of *ff* over a half note G2, followed by a dynamic marking of *fff* over a quarter note G2 and a quarter rest.